

Time Lapse Morphometry Imaging 'TiMI'



Fertility Facts

Time Lapse Morphometry Imaging (TiMI) offers embryo photography every 10 minutes to capture developmental milestones in the embryo's life. TiMI provides several advantages over conventional embryo culture.

3186.31 - 08/17

- Embryos are cultured in an uninterrupted environment and do not need to be taken out of the incubator for inspection.
- TiMI picks up unusual and detrimental events that would escape a daily snapshot inspection. This identifies 10-15% of embryos with very low potential. Therefore TiMI helps us identify the embryos that have the best potential for implantation.
- An added bonus of TiMI is the availability of a video of the embryo's development for your own personal use. Please note that there are some occasions where it is not possible to make a video.

Several studies show that using TiMI increases the chance of pregnancy using the first embryo transferred by up to 10%.

Frequently Asked Questions

Am I guaranteed a spot in TiMI?

Because TiMI incubators have limited capacity, we have a scheduling system to ensure that patients who request TiMI will receive this service. It is important to know that TiMI might not be available when you request it – which means you might have to wait a month if you do not want to do a cycle without TiMI.



PLEASE NOTE, If your cycle is publicly funded, your treatment date will not be rescheduled due to the unavailability of TiMI.

Do all of my embryos go into TiMI?

Each patient is allocated one spot in TiMI and this is limited to 12 embryos (or 16 in some of our clinics). So, if you have fewer embryos (fertilised oocytes), all will be cultured in TiMI. If you have more than 12 embryos (or 16) and the TiMI incubator is full, the remaining embryos will be cultured in a standard incubator. If it's not possible to culture all of your embryos in TiMI, the Embryologist will select the best quality fertilised eggs for TiMI.

0800 10 28 28
fertilityassociates.co.nz



FERTILITY associates | a better understanding
TE RAUHANGA O TE WHARETANGATA

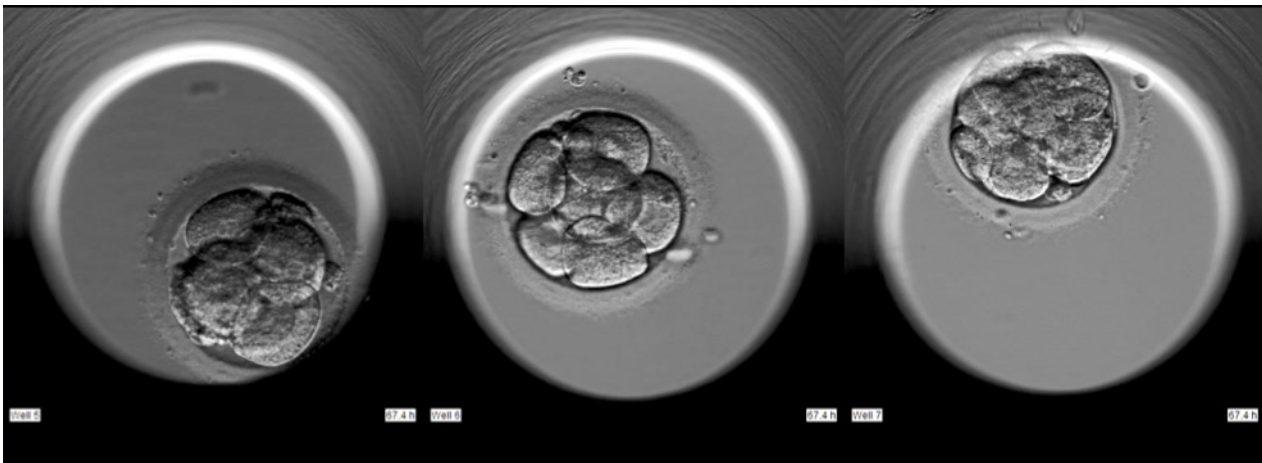
Time Lapse Morphometry Imaging 'TiMI' continued...

How will I receive the video?

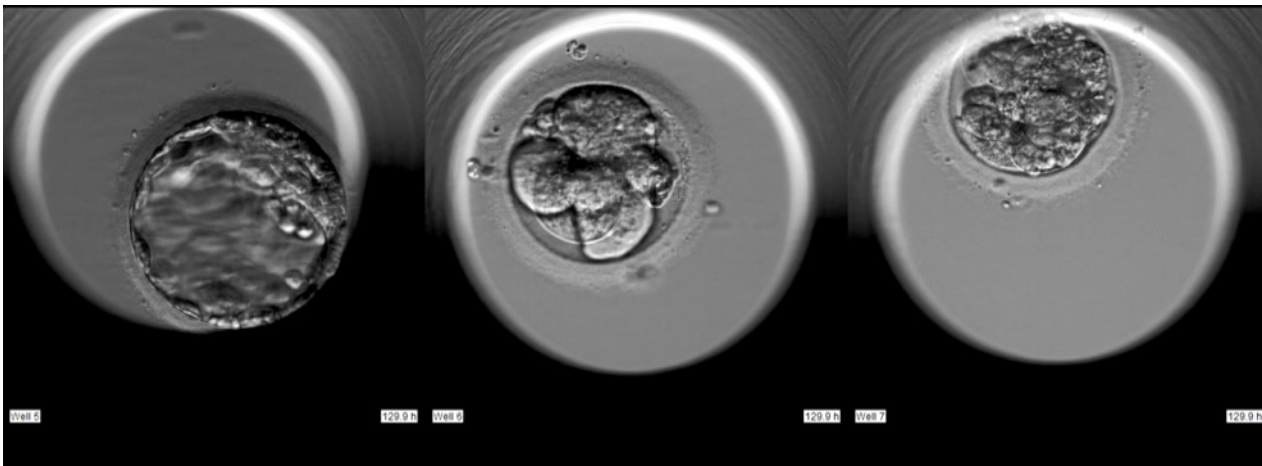
An Embryologist will create a video of all embryos that are transferred or frozen, save them to a USB drive, and post them to you after your cycle. TiMI is an incubator first and foremost and there is a small chance we will not be able to make a video of your embryo(s) due to technical IT issues. This however, will not affect the quality of embryo culture.

Who can benefit from TiMI?

All patients may benefit from less handling and more information about their embryos. For patients who have a large number of embryos, TiMI allows better ranking of which to transfer first. Patients who expect to have only 2-3 embryos available for selection OR those who have had low quality embryos previously are also expected to benefit.



Day 3



Day 5

The example above is a good example of how TiMI can help us pick from a few embryos. The first row of pictures are day 3 embryos and they all look quite good – it would be difficult to know which embryo is likely to continue growing. The second row shows that only the first embryo continued to grow and become a blastocyst. TiMI gives us additional information to help make a better decision about which to transfer.

